

Chroma Systems Solutions, Inc.

Ethernet Connection for 63600

DC Load

Keywords: DC Load, Ethernet, TCP/IP

Title: Ethernet Connection for 63600

Product Family: 63600

Abstract

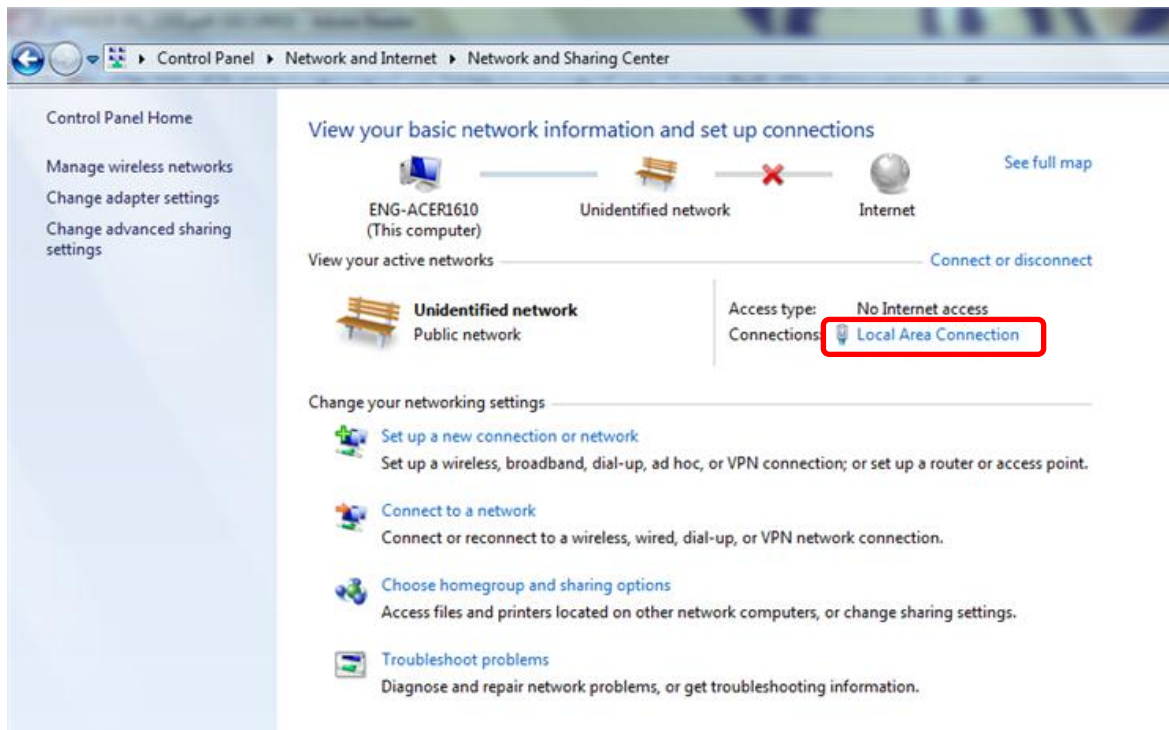
Before programming the electronic load remotely via an Ethernet computer, you need to know the IP address, Gateway address and Subnet mask. Each device connected to the Ethernet interface has a unique IP address assigned to it.

Solution

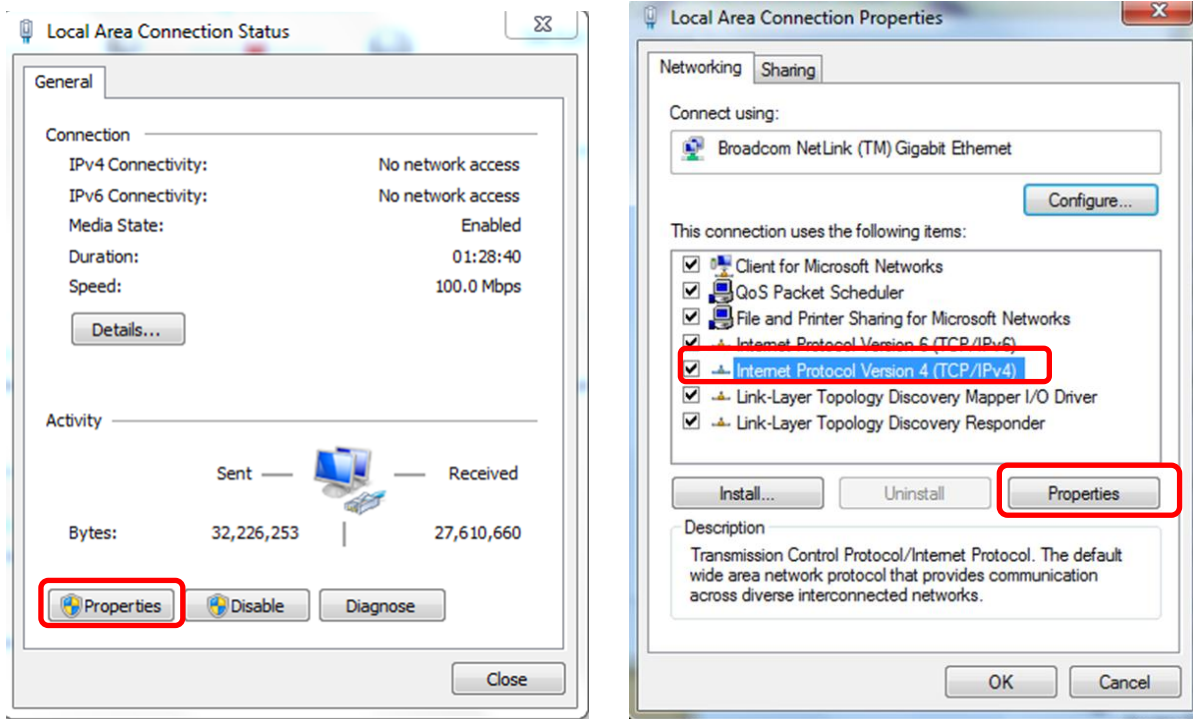
Case 1: In private LAN

In private LAN, when 63600 is connected to a PC through a crossover cable, the IP addresses of both devices need to be set manually.

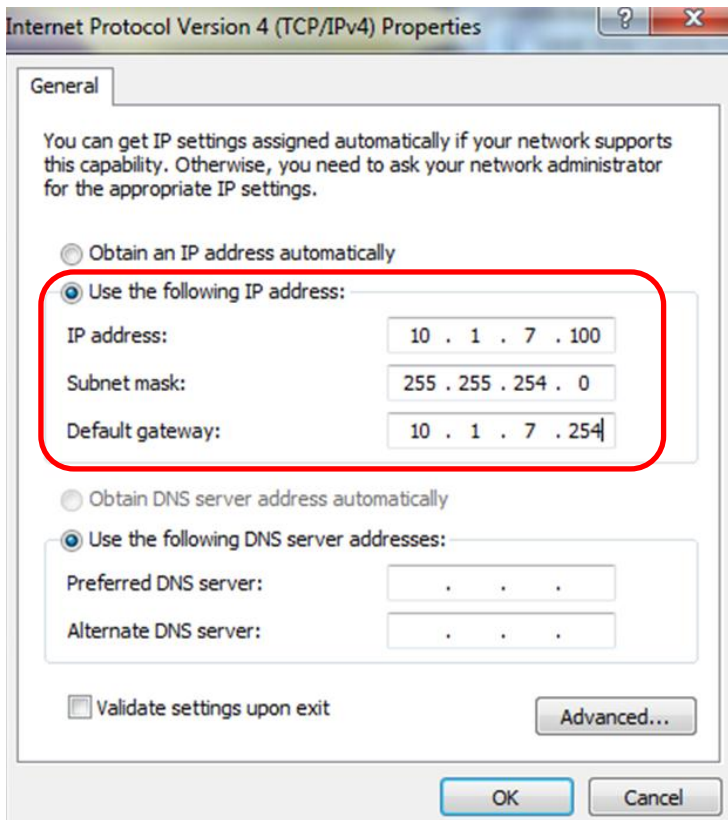
Step 1: Control panel → Network and Internet → Local Area Connection



Step 2: After click on “Local Area Connection” the connection status window pops up and click on “Properties”

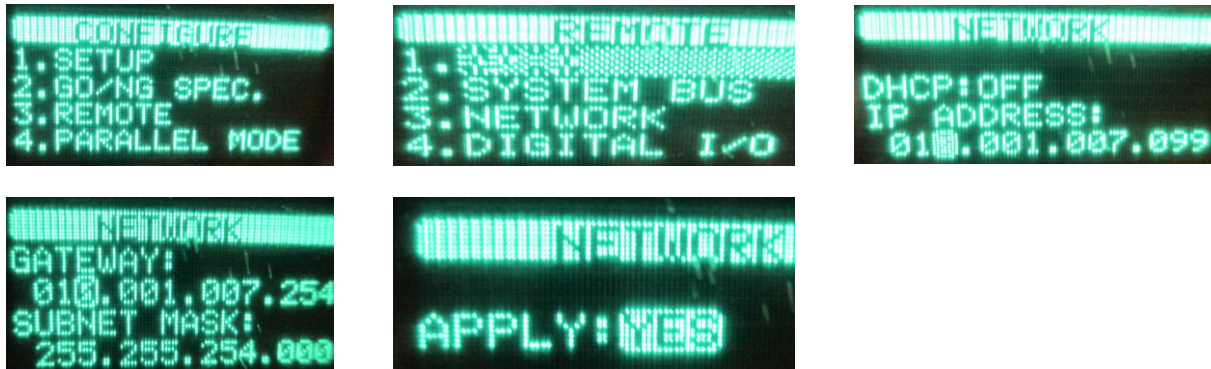


Step 3: Assign IP address to the PC, confirm and exit



Step 4: Assign IP address, Gateway address and Subnet mask to 63600 loads

Press **ADVA** + **ENTER** on the front panel of any module to go CONFIG screen → 3 Remote → 3 Network → DHCP ON → IP ADDRESS → GATEWAY → SUBNET MASK → APPLY YES

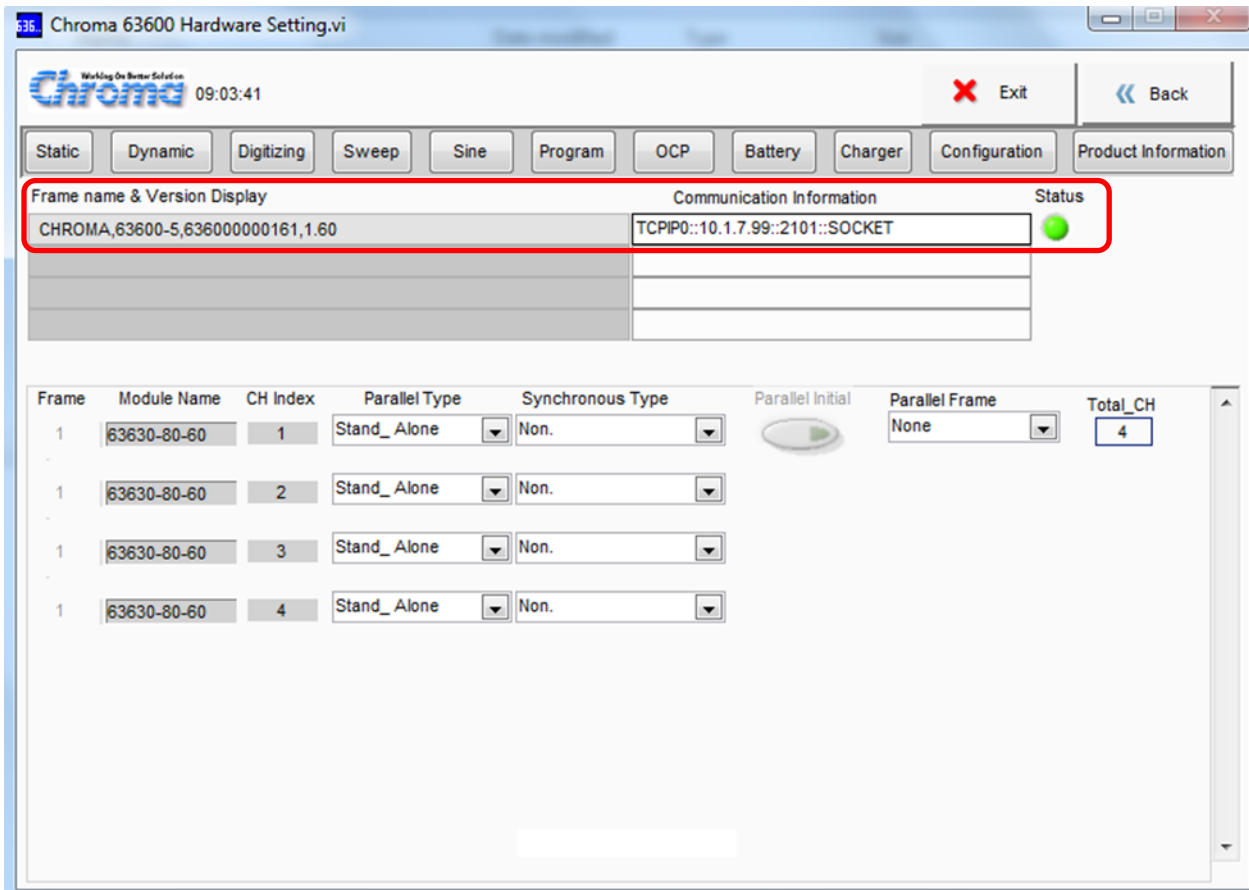


*Note: The load should have the same Gateway and subnet mask as the PC, offset the IP address of the load by 1.

Step 5: Launch the softpanel, type in the TCP/IP address that is assigned to the load



The following screen shot of the softpanel shows the communication has established successfully



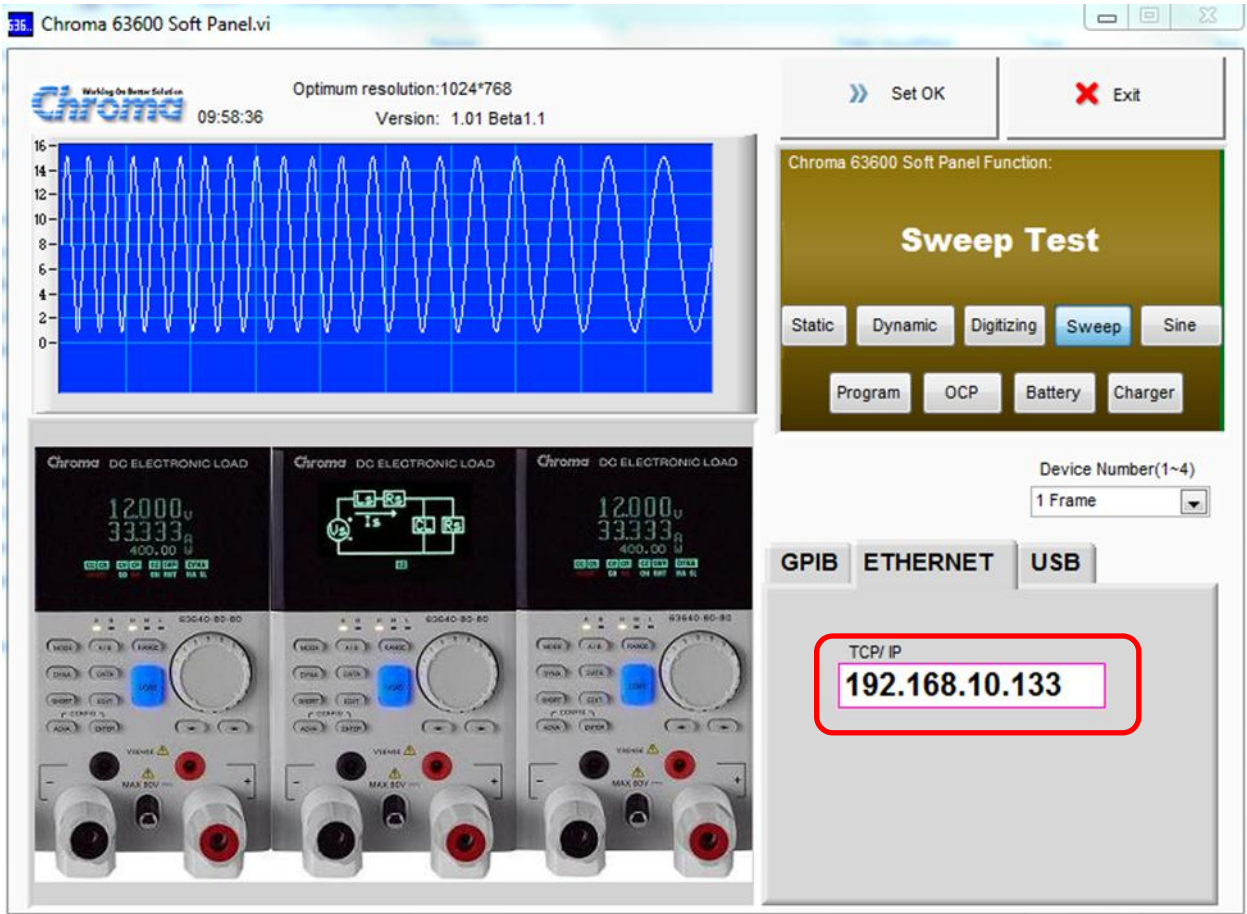
Case 2: In site LAN

Step 1: Make PC obtain IP address automatically.

Step 2: Press **ADVA** + **ENTER** (on the front panel of any module to go CONFIG screen → 3 Remote → 3 Network → DHCP ON → APPLY YES



Step 3: Launch the softpanel, type in the IP address that is assigned to the 63600 automatically



*Note: straight through internet cable is used in site LAN

For more details, please refer to 63600 user manual section 5.1.4 Ethernet in Remote Control